

A Child is a Child

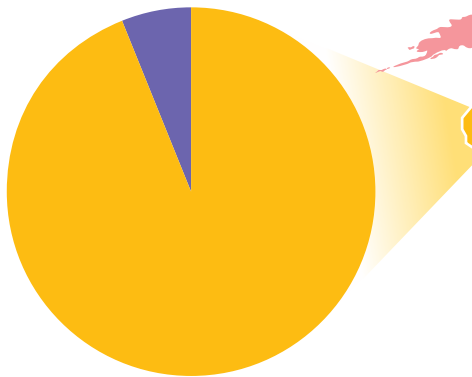
SNAPSHOT: California
Children's Health



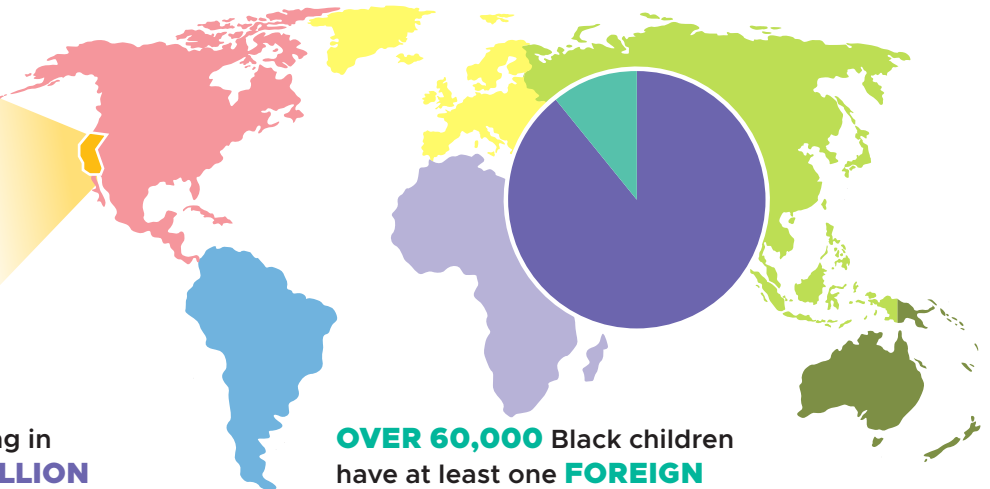
Black Children's Health

We know that when children are healthy, they are more likely to succeed in school and in life. That's why The Children's Partnership works to level the playing field so that children from historically marginalized communities have the resources and opportunities they need to thrive.

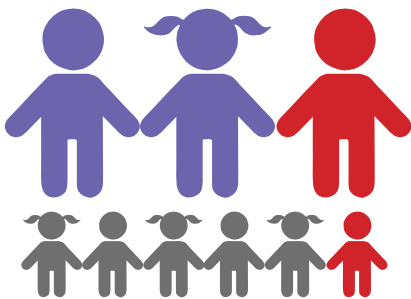
This infographic, the first in a series, provides an overview of key child health facts in California and nationally to inform the work ahead. We are excited to work together to make California the best state to raise healthy, thriving children.



Of over 8 million children living in California, nearly **HALF A MILLION ARE BLACK.**



OVER 60,000 Black children have at least one **FOREIGN BORN PARENT.**



POVERTY is experienced by nearly **1 in 3** Black children compared to 1 in 6 of all children in California.

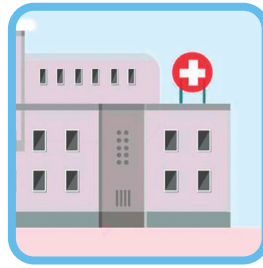


97% of Black children under 19 years old have health insurance coverage, yet more than

11,000 Black children in California are **UNINSURED.**

1 in 5

Black children in California reported having **ORAL HEALTH** problems such as toothaches, bleeding gums, or decayed teeth or cavities.



7%

of Black children in California **DO NOT HAVE A USUAL SOURCE OF CARE.**

4%

utilize **EMERGENCY ROOM VISITS** as their usual source of care.

1 in 3

California Black households say that sometimes they **COULD NOT AFFORD TO EAT.**

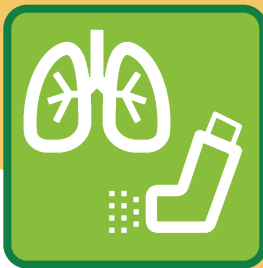


BLACK MOTHERS in California are **3X to 4X** more likely to die from causes related to pregnancy or childbirth compared to white mothers. **BLACK INFANTS** are **3X** more likely to die compared to white infants.



73%

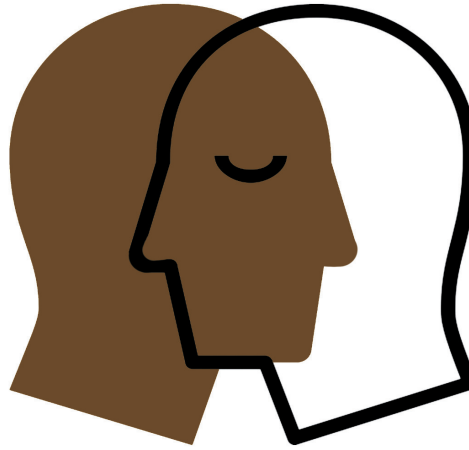
BLACK HIGH SCHOOL STUDENTS have reported a **73% INCREASE IN SUICIDAL IDEATION** despite significant drops in self-reported suicidal ideation for all racial and ethnic groups of U.S. high school students.



1 in 4 California Black children have been **DIAGNOSED WITH ASTHMA** and have **6X HIGHER MORTALITY RATES** from asthma compared to white children.



SUICIDE RATES for children under 13 years old are **2X HIGHER** for Black children than white children.



1 in 3

Black children experience two or more **ADVERSE CHILDHOOD EXPERIENCES (ACEs)** compared to nearly **1 in 5** white children.

PARENTAL INCARCERATION and **DEATH OF A PARENT OR GUARDIAN** are amongst the most common ACEs for Black children.



HEALTH CARE FOR ALL FAMILIES



► www.allinforhealth.org ► www.childrenspartnership.org

© The Children's Partnership, February 2020

Note: The Children's Partnership collected Black children's data from U.S. Census Bureau's 2018 one-year population estimates. This does not include Black children who also identify as multiracial. All numbers in this fact sheet have been rounded to the nearest whole number. Citations for all data can be found at: bit.ly/ABlackChildIsAChild